

B.Eng.

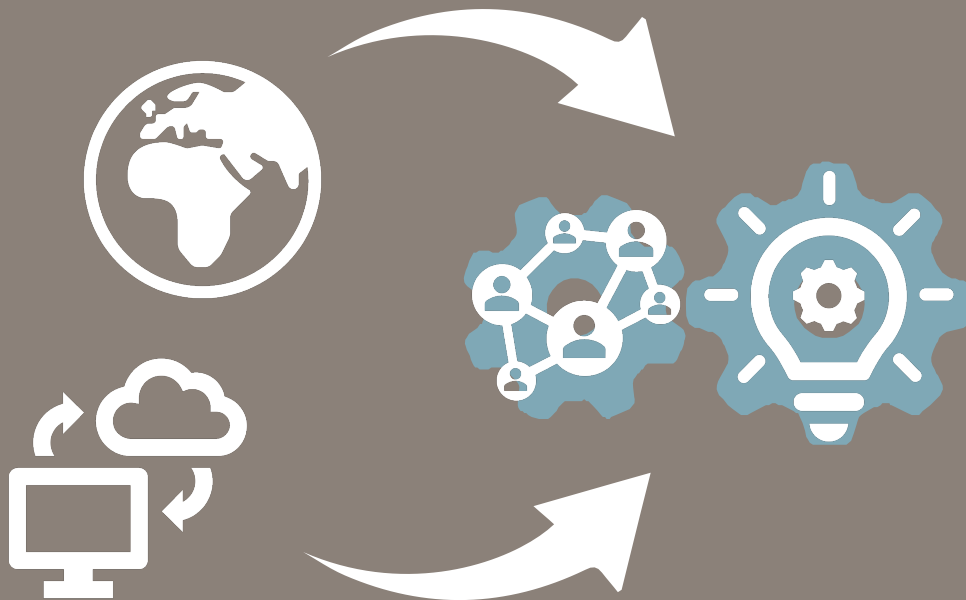
# Industrial Engineering

Degree Programme Presentation



Ostbayerische Technische Hochschule  
Amberg-Weiden

# A programme combining challenges of engineering and economics



01

Globalization and digitalization are changing fundamentally how industry and businesses operate

02

To be successful, deep knowledge in engineering or management is not enough - interdisciplinarity is key

03

In addition to knowledge, further skills are essential: creativity, languages, intercultural competence, agility, team work ...

# Come and i-study with us



## interdisciplinary

Broad and at the same time in-depth curriculum with high application relevance and project work

## international

Fully taught in English while still acquiring at least B2.2 German skills, international internship, cooperation with partner universities

## individual

Many elective modules, entrepreneurship and research projects to realize own ideas, different study paths to address different language levels

## Engineering

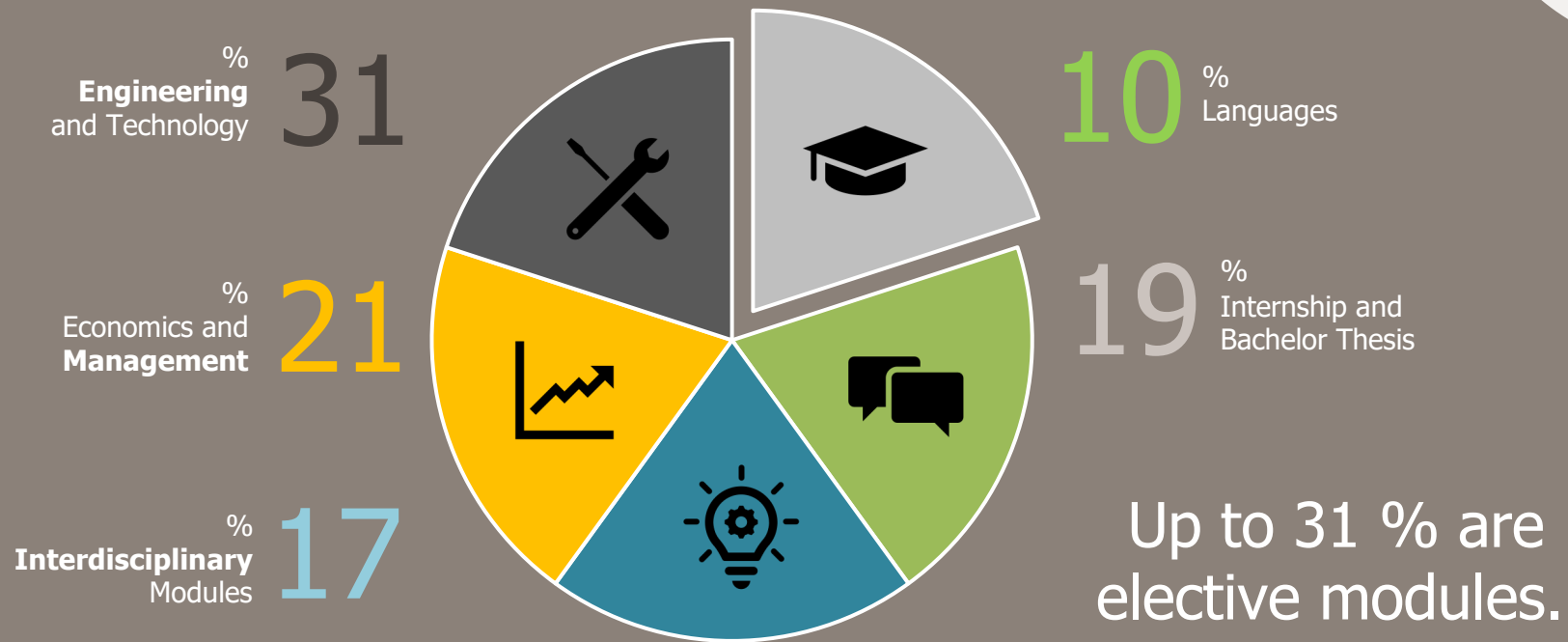
Understand and apply the necessary technology, computer science and engineering. Digitalization in industry is the key to success.

This is how we do it



Spotlight on  
the curriculum

# Interdisciplinary curriculum



Semester	Engineering/Technology (each 5 ECTS)			Economics/Management (each 5 ECTS)		Interdisciplinary (each 5 ECTS)	
Winter <b>1</b> 30 ECTS	Mathematics I <i>T1</i>	Technical Mechanics <i>T2</i>	Fundamentals of Business Administration <i>E1</i>	Principles of Accounting and Finance <i>E2</i>	German I / Basic Elective <i>I1</i>	Informatics <i>I5</i>	
Summer <b>2</b> 30 ECTS	Mathematics II <i>T3</i>	Mechanical Development <i>T4</i>	Business Processes Management <i>E3</i>		German II / Basic Elective <i>I2</i>	Statistics and Quantitative Methods <i>I6</i>	Intercultural Communication <i>I7</i>
Winter <b>3</b> 30 ECTS	Production Technology <i>T5</i>	Physics <i>T6</i>	Project Management and Agile Methods <i>E4</i>	Marketing and Sales <i>E5</i>	German III / Basic Elective <i>I3</i>	Object-oriented Coding <i>I8</i>	
Summer <b>4</b> 30 ECTS	Industrial Engineering <i>T7</i>	Electrical Engineering <i>T8</i>	Materials Engineering <i>T9</i>	Private Commercial Law <i>E6</i>	German IV / Basic Elective <i>I4</i>	Logistics <i>I9</i>	
Winter <b>5</b> 30 ECTS	Internship (Practical Semester, 30 ECTS) <i>PS</i>						
Summer <b>6</b> 30 ECTS	Science/Technology Elective 1	Science/Technology Elective 2	Product Management <i>E7</i>	Economics Elective 1	Interdisciplinary Elective 1	Interdisciplinary Elective 2	
Winter <b>7</b> 30 ECTS	Science/Technology Elective 3	Science/Technology Elective 4	Economics Elective 2		Interdisciplinary Elective 3	Bachelor Thesis (10 ECTS) <i>BA</i>	

# Course of Study

# A truly international study programme

## English

The program is fully English-taught.

## German

- Improve your German to at least level B2.2 or even C1
- Some electives can be chosen in German
- Already an expert in German? Discover new or extend your knowledge of other foreign languages



## Intercultural competence

- Specific module teach intercultural competencies
- Multicultural student groups
- Lots of teamwork to experience intercultural challenges
- WIGCares programme and helping hands

## Work and study

- Internship in a country different from your home base
- Semester abroad in exchange programmes with partner universities around the world

# Design your own study programme

4 of 13

## **Engineering/Technology Electives:**

Select electives like Robotics, IoT Technology or Digital Image Processing.

2 of 6

## **Economics/Management Electives:**

Select electives like Business Model Innovation, International Marketing or Performance Management.

3 of 9

## **Interdisciplinary Electives:**

Select electives like Usability Engineering, Smart Factory or Blockchain.

4

## **Language Electives:**

Already reached level B2.2 in German? Then you can select other electives instead of German classes.





# Job Opportunities and Business Areas



● Development engineer

● Project manager

● Industrial Engineer

● Process planning engineer

● Technical purchaser

● Sales Engineer

● And so many more...



Automotive Industry



Aerospace



Medical Engineering



Research and Development



Mechanical and Plant Engineering

And more...

# This degree program is just right for you if ...



...digitization is not just a buzzword for you, but you are interested in the necessary information and communication technology as well as computer science.



...you are interested in engineering, management and interdisciplinary topics.



...you want to have contact with German industry and you would like to have good job prospects there.

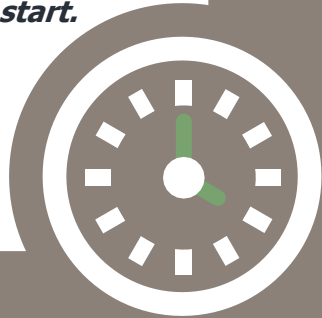


...you are excited about interdisciplinary and intercultural projects.

# Admission requirements

## Application

*This is the most  
exciting study  
programme I have  
ever heard about!  
I can't wait to start.  
Please find  
attached ...*



University entrance qualification



Proof of English B2



Proof of German A2

# Your road to OTH



Ostbayerische Technische Hochschule  
Amberg-Weiden

International applicants who have not obtained their higher education entrance qualification in Germany must have their credentials reviewed and approved by UniAssist.

01

Enrolment: preliminary admission letter, registration on our student administration platform, upload of documents and payment of administrative fee, issue of student I.D. card and enrolment document

03

02

04

Registration, Residence Permit, Health Insurance, Housing

Application period for the winter term: 1 May - 15 July  
If the number of applicants is lower than the number the University can take in, the application period may be extended.

# We won't let you d(r)own!

1

Even before the semester start, we offer an **international orientation week and the "fit for studying" programme** providing you with all the necessary info to get you started.

2


In the university's **WIGCares programme**, students from higher semesters take first-year students "by the hand", passing on their knowledge about studying and student life.

3

Last, but not least: Thanks to **small student groups**, professors, lecturers and support staff quickly get to know you by name. We are quickly accessible and try to address any problems that might come up.



# Happy to help



**Prof. Dr. Kris Dalm**  
Head of the Program **Industrial Engineering**  
+49 (961) 382-1633  
[k.dalm@oth-aw.de](mailto:k.dalm@oth-aw.de)

**Dr. Annabelle Wolff**  
Head of the International Office  
+49 (9621) 482-3131  
[a.wolff@oth-aw.de](mailto:a.wolff@oth-aw.de)

**Andrea Bäuml**  
Administrative Staff at the Department  
of Industrial Engineering & Healthcare  
+49 (961) 382-1703  
[a.baeuml@oth-aw.de](mailto:a.baeuml@oth-aw.de)

**Anke Reiter**  
Administrative Staff at the  
Department  
+49 (961) 382-1701  
[a.reiter@oth-aw.de](mailto:a.reiter@oth-aw.de)

**Kathrin Forster**  
Study Office  
Telefon +49 (961) 382-1125  
[k.forster@oth-aw.de](mailto:k.forster@oth-aw.de)

# Where can I find more information?

Find out more about the university, the study programme and our support system on our websites:



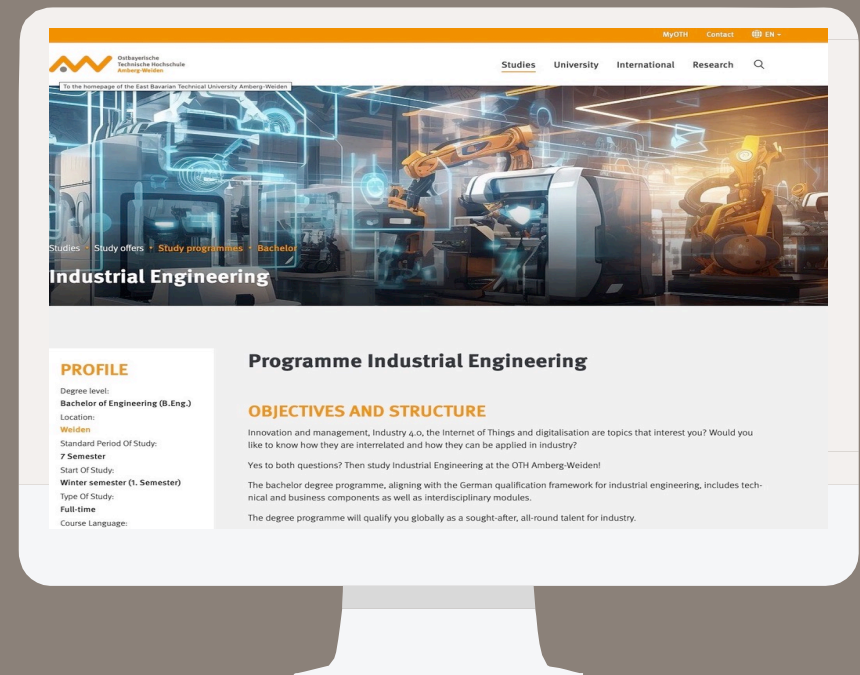
The study programme's website  
<https://www.oth-aw.de/iie>



Our International Office  
<https://www.oth-aw.de/en/international/internationales-profil/international-office/>



The university in general  
<https://www.oth-aw.de/en/>



# Key Facts & Figures about the Study Programme



Bachelor of Engineering (B.Eng.)



Approx. 30 per semester



7 semesters, 210 ECTS



Start in winter



English-speaking program,  
Qualifying students to German Level B2.2  
Other languages optional



Application period:  
for winter term: May 1 –July 15  
*in some semesters , periods may be extended*



Taught on campus  
in Weiden (Bavaria, Germany)



No tuition,  
only student services fee



# OTH Amberg-Weiden at a glance

Key figures (Year 2022/23)



## 4 departments

- Electrical Engineering, Media and Computer Science
- Mechanical/Environmental Engineering
- Weiden Business School
- Industrial engineering and health



## 1,528 first-year students<sup>1</sup>

<b>1.038</b>	for the winter semester 2022/23		
<b>490</b>	for the summer semester 2023		
<b>Winter term 2022/23</b>	OS* 14	Bachelor 891	Master 133
<b>Summer term 2023</b>	OS* 9	Bachelor 356	Master 125



## 450 employees<sup>2</sup>

<b>108</b>	Professors
<b>16</b>	Teachers for special tasks
<b>98</b>	Research assistants
<b>228</b>	Non-scientific employees



## 52 study programmes

<b>27</b>	Bachelor degree programmes
<b>17</b>	Master's degree programmes (consecutive)
<b>7</b>	Continuing education masters
<b>1</b>	Orientation programme prepareING



## 4,035 students<sup>1</sup>

<b>1.491</b>	at the Amberg site		
<b>2.532</b>	at the Weiden site		
<b>12</b>	Cross-location (prepareING)		
<b>OS*</b> 12	Bachelor 3,245	Master 778	
	weiblich 1,491	männlich 2,544	



## International

<b>1.146</b>	foreign students
<b>98</b>	Partner universities in <b>42</b> countries
<b>3</b>	Double-degree programmes



## Partners / Networks

<b>26</b>	Innovative Learning Locations (ILO)
<b>33</b>	PartnerCircle members



### Sources:

<sup>1</sup> Student statistics - Primuss, as at 01/06/2023;  
<sup>2</sup> SAP VIVA, status: 01/03/2023;

### Footnote:

\*OS: Orientation programme prepareING (module study)

# Ready for take-off? Join us and apply today!

---

B.Eng. Industrial Engineering

<https://www.oth-aw.de/iie>

